



industriareal®

ANKER^{MR}
ELECTRIC

ELECTRIC POWER FITTINGS



**ELECTRIC SUBSTATIONS AND
TRANSMISSION TOWERS**

A PROUD MEXICAN MANUFACTURER

Eclipse No. 2791, Jardines del Bosque
44520 Guadalajara, Jalisco, México.
[+52] 33 3880.0700 • ventas@industriareal.com
www.industriareal.com

Approved manufacturer by:

LAPEM

Mexican Federal
Electricity Commission (CFE)
Equipment and Materials
Testing Laboratory.

ELECTRIC POWER FITTINGS



4 VIAS MOUNTING BRACKET AB

- AB-1
- AB-2
- AB-3



MOUNTING BRACKET ABU

- AB-U1
- AB-U2



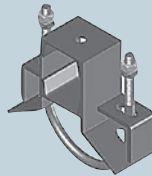
MOUNTING BRACKET AG

- 1AG
- 2AG
- 3AG

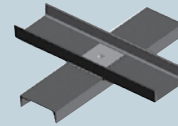


MOUNTING BRACKET UH

- 1UH
- 2UH
- 3UH



UNIVERSAL MOUNTING BRACKET



ANCHOR

- A1
- A2



PTR ARMED CROSS ARM

- RV-200
- PV-75
- PV-200
- PV-250
- PT-200
- PT-250
- PR-200



ARMED CROSS ARM

- C1-115
- CR1-11
- CR3-69
- C2-115
- CR2-115
- CR4-69



ANGLE CROSS ARM

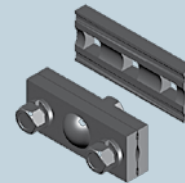
- A4E
- A4R



J HOOK



CLAMP AND BASE RB



PARALLEL CLAMP GP1



J STAY ROD

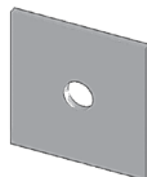


PLATE PL-1



CURVED PLATE PL-1C



PLATE PL-5

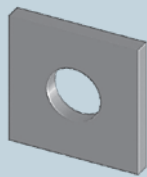


PLATE PL-6

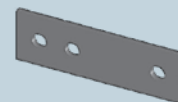


PLATE PL-7



DIVIDER SIT



CABLE SUPPORT



ANGULAR SUPPORT V

➤ WE OFFER OUR SERVICES OF:
HOT DIP GALVANIZATION BY IMMERSION.



ELECTRIC POWER FITTINGS



**MOUNTING
BRACKET BD**

- 1BD
- 2BD
- 3BD



**MOUNTING
BRACKET BS**

- 1BS
- 2BS
- 3BS



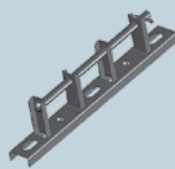
**MOUNTING
BRACKET U**

- 1U
- 2U
- 3U
- UC
- UL



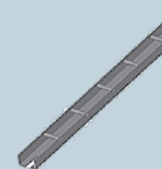
CONCRETE POST RING

- 127
- 152
- 178



**SECONDARY
RACK B**

- B1
- B2
- B3
- B4



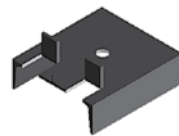
SUPPORT BRACKET

- 350 MM
- 1000 MM
- 650 MM



CHANNEL CROSS ARM

- C4T
- C4R
- CS1
- C4V
- C4S
- C4E



**CROSS ARM
SUPPORTER 1M**



EXTENSIVE LINK EA



**ALUMINUM
ALLOY STRAIN
CLAMP**

- RAL-8 ALUM



**SHACKLE G1
FORGED**



**PLATE
HA-1**

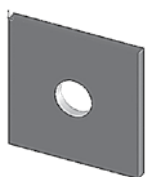


PLATE PC

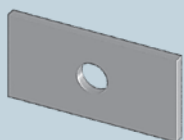
- 1PC
- 2PC



**PLATE
PL-2**



**PLATE
PL-3**



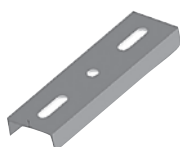
**PLATE
PR**



**PROTECTOR
STAY ROD R1**



**PLATFORM
T3**



**SUPPORT
CV1**



**LIGHTNING
SUPPORT**



**SUPPORT
SPA**

ELECTRIC POWER FITTINGS



BRACE CV
• CV1 • CV69
• CV115



BRACE H
• H1 • H2 • H3



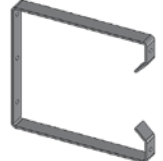
BRACE T
• T1 • T2



MACHINED BOLT



STAY ROD TUBE



CABLE SUPPORT BRACKET BS



CABLE SUPPORT BRACKET CS
• CS 125
• CS 350
• CS 250



DEAD END CLAMP RE



DEAD END ANCHOR CV1



DEAD END EYE OT



DEAD END EYE RE



TRANSFORMER PLATFORM



STAY ROD CS



EYE STAY ROD P
• P1 • P3
• P2 • P4



EYE STAY ROD PO
• 1PO • 2PO



ANCHOR STAY ROD PA
• 1PA • 2PA • 3PA



DOUBLE THREADED STAY ROD

- 16 X 356 (14")
- 16 X 406 (16")
- 16 X 457 (18")
- 16 X 508 (20")
- 16 X 558 (22")
- 16 X 610 (24")
- 16 X 660 (26")

INSULATORS



SPOOL INSULATOR
• 1C or 1R ANSI 53-3



PORCELAIN STAY INSULATOR
• 3R ANSI 54-3
• 4R ANSI 54-4



HIGH CONTAMINATION INSULATOR
• 13PC
• 22PC
• 33PC



SYNTHETIC SUSPENSION INSULATOR
• 13.8 KVA
• 23 KVA
• 34.5 KVA



PINPOST PORCELAIN INSULATOR
• 13PD ANSI 57-1
• 22PD ANSI 57-2
• 33PD ANSI 57-3



COLD SHRINK BREAKOUT BOOT
• 4" X 3
• 5" X 3



HOT SHRINK BREAKOUT BOOT
• 4" X 3
• 5" X 3

ELECTRIC SUBSTATIONS AND TRANSMISSION TOWERS



ELECTRIC SUBSTATION STRUCTURES



SUBTRANSMISSION AND TRANSMISSION TOWERS



MORELOS POSTS